

---

<b>Cable ID</b> 151-8 FTP4 0.48CV	<b>Summary</b> PASS*	<b>Test Limit</b> TIA Cat 5e Channel	<b>Length</b> 286 ft	<b>Headroom</b> 0.0 dB (NEXT)	<b>Date / Time</b> 09/09/2016 02:39 PM
--------------------------------------	-------------------------	---	-------------------------	----------------------------------	---

Total Length:	286 ft
Number of Reports:	1
Number of Passing Reports:	1
Number of Failing Reports:	0
Number of Warning Reports:	0
Documentation Only:	0



**Cable ID: 151-8 FTP4 0.48CV**

Date / Time: 09/09/2016 02:39:00 PM

Headroom 0.0 dB (NEXT 12-36)

Test Limit: TIA Cat 5e Channel

Cable Type: Cat 5e F/UTP

Calibration Date: 05/29/2012

Operator: XF

Software Version: 2.7700

Limits Version: 1.9400

NVP: 69.0%

**Test Summary: PASS**

Model: DTX-1800

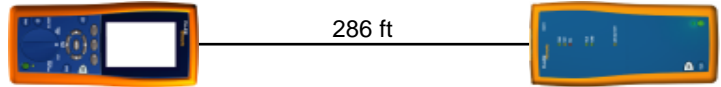
Main S/N: 2063051

Remote S/N: 2063044

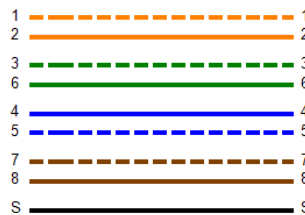
Main Adapter: DTX-PLA002

Remote Adapter: DTX-PLA002

Length (ft), Limit 328	[Pair 78]	286
Prop. Delay (ns), Limit 555	[Pair 45]	440
Delay Skew (ns), Limit 50	[Pair 45]	19
Resistance (ohms)	[Pair 78]	17.9
Insertion Loss Margin (dB)	[Pair 78]	7.0
Frequency (MHz)	[Pair 78]	100.0
Limit (dB)	[Pair 78]	24.0

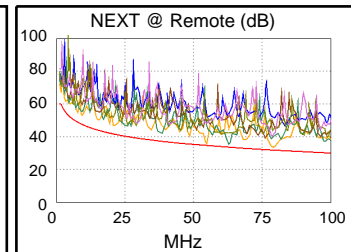
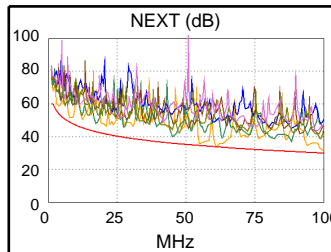


Wire Map (T568B)  
**PASS**

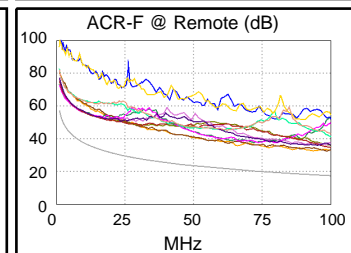
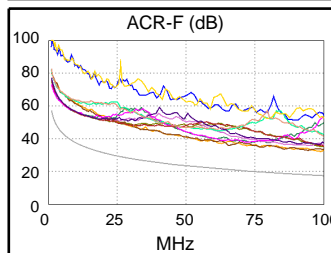


Worst Case Margin Worst Case Value

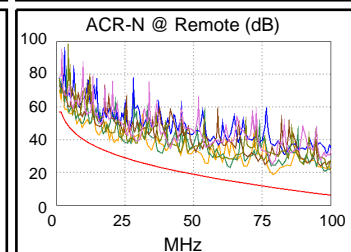
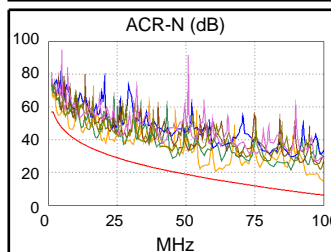
PASS	MAIN	SR	MAIN	SR
Worst Pair	12-36	12-36	12-36	12-36
<b>NEXT (dB)</b>	0.0*	1.2	1.0	1.7
Freq. (MHz)	60.8	54.8	100.0	78.8
Limit (dB)	33.8	34.6	30.1	31.9
Worst Pair	12	12	36	12
<b>PS NEXT (dB)</b>	2.8	3.7	3.7	3.9
Freq. (MHz)	60.8	54.8	100.0	78.5
Limit (dB)	30.8	31.6	27.1	28.9



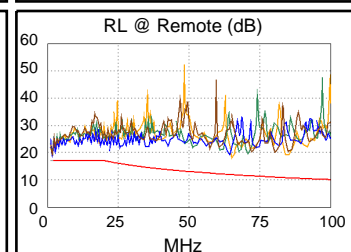
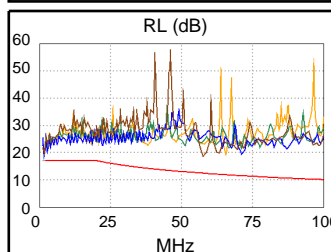
PASS	MAIN	SR	MAIN	SR
Worst Pair	12-36	12-36	12-36	12-36
<b>ACR-F (dB)</b>	14.7	14.5	14.7	14.5
Freq. (MHz)	98.3	93.8	98.8	93.8
Limit (dB)	17.6	18.0	17.5	18.0
Worst Pair	36	36	36	36
<b>PS ACR-F (dB)</b>	15.2	15.3	15.2	15.6
Freq. (MHz)	98.0	93.8	98.8	99.8
Limit (dB)	14.6	15.0	14.5	14.4



N/A	MAIN	SR	MAIN	SR
Worst Pair	12-36	12-36	12-36	12-36
<b>ACR-N (dB)</b>	3.7	6.1	8.1	7.8
Freq. (MHz)	7.6	54.8	100.0	78.8
Limit (dB)	42.8	17.2	6.1	10.8
Worst Pair	36	12	36	12
<b>PS ACR-N (dB)</b>	6.3	7.8	10.8	10.2
Freq. (MHz)	7.6	9.1	100.0	78.8
Limit (dB)	39.8	37.9	3.1	7.8



PASS	MAIN	SR	MAIN	SR
Worst Pair	45	45	78	12
<b>RL (dB)</b>	3.2	3.2	6.2	5.2
Freq. (MHz)	2.8	2.6	57.5	65.3
Limit (dB)	17.0	17.0	12.4	11.9



Compliant Network Standards:

10BASE-T	100BASE-TX	100BASE-T4
1000BASE-T	ATM-25	ATM-51
ATM-155	100VG-AnyLan	TR-4
TR-16 Active	TR-16 Passive	

\* Measurement is within the accuracy limits of the instrument.